



Model 2240

10.4" Industrial Panel PC

Features:

- 10.4" VGA 640x480 color TFT LCD Computer
- Front bezel in NEMA 4/12 & IP65 Compliant
- Strengthened glass or resistive touchscreen protects LCD display from scratch.
- Aluminum bezel with heavy duty steel chassis
- NS geode 300MHz CPU

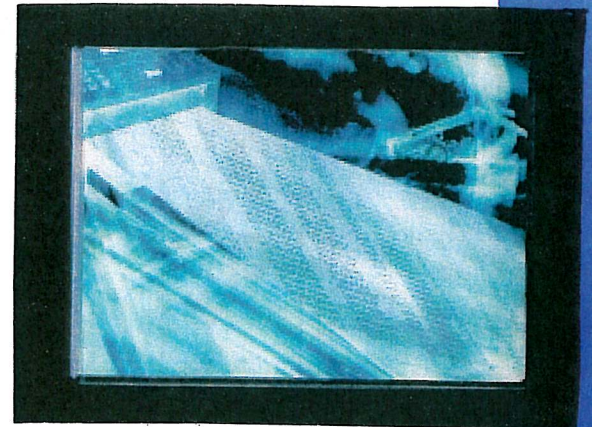
Specifications

- . CPU:
NS Geode 300MHz CPU
- . Memory:
1 SO-DIMM supports up to 128MB
- . Chipset:
NS CS5530
- . Real Time Clock:
Integrated RTC with on-board lithium battery
- . VGA Interface:
CS5530 integrated, supports CRT/TFT LCD, up to 4MB shared memory
- . Solid State Disk Interface:
One CompactFlash socket
- . Audio Interface:
None
- . LAN Interface:
Dual Realtek 8139C 10/100 Ethernet
- . Multi-I/O Ports:
2 x RS-232, 1 x RS-232/422/485, 1 x parallel port (ECP/EPP), 2 x USB
- . Drive Bay:
None
- . Power Supply:
External +12V and +5V input
- . Gross Weight:
5.5 Lbs
- . Cooling:
CPU fan
- . Mounting:
Panel mount
- . Finish:
Nickel plated
- . Expansion Slot:
None

- . Viewing Angle:
45° (R), 45° (L), 15° (Up), 35° (Down)
- . LCD MTBF(Hrs):
50,000 hours
- . Back Light MTBF(Hrs):
50,000 hours

TouchScreen

- . Type:
4-wire resistive
- . Resolution:
1024 x 1024
- . Transparency:
>= 81%
- . Lifetime:
> 1 million touches
- . Operating Pressure:
<= 40g
- . Scratch Resistance:
>= 3H
- . Controller:
RS-232 interface
- . OS Support:
MS DOS, Windows 3.1/95/98/NT/2000/
ME/XP/CE



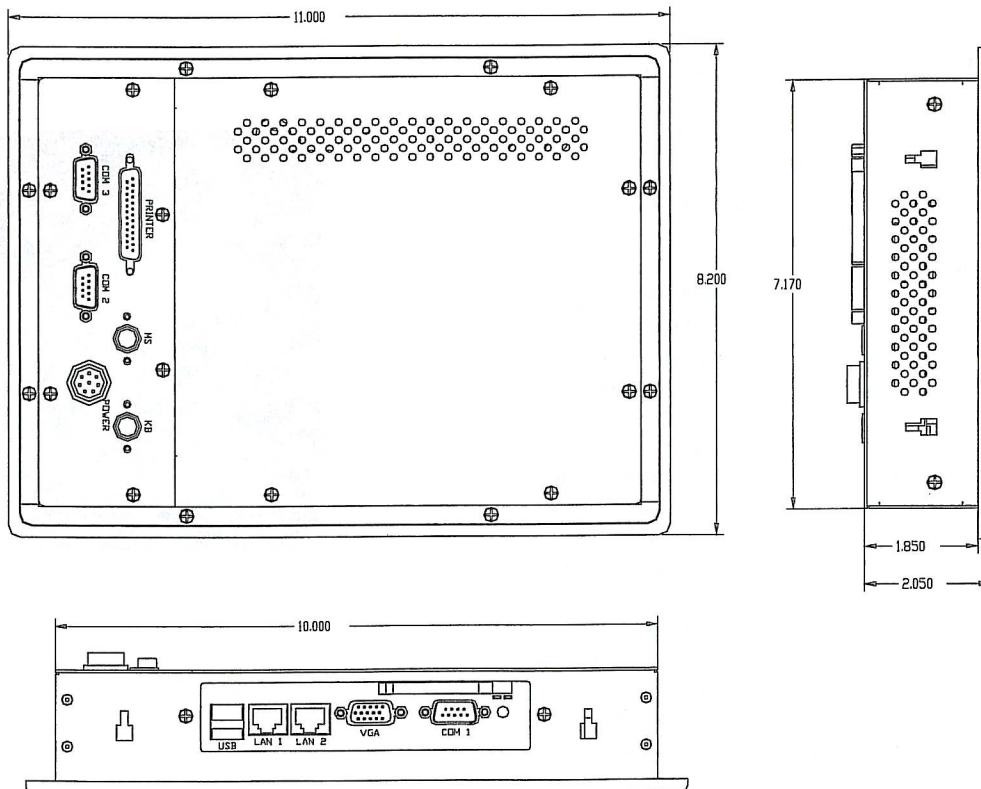
LCD

- . Display Type:
10.4" color TFT LCD display
- . Max. Resolution:
800 x 600
- . Luminance (cd/m2):
150 nits
- . Video Control:
None

Environmental

- **Operating Temperature:**
0°C ~ 45°C (32°F ~ 113°F)
- **Storage Temperature:**
-20°C ~ 60°C (-4°F ~ 140°F)
- **Storage Humidity:**
10 ~ 95% @ 40°C, non-condensing
- **Vibration:**
1 G/5 ~ 500Hz/operation
- **Shock:**
10 G peak acceleration (11msec. duration)
- **Dimension (W x H x D):**
11.00" x 8.20" x 2.05"
- **Cutout Dimension (W x H):**
10.00" x 7.17"

Line Drawing



All Weather, Inc.
1165 National Drive
Sacramento, CA 95834

Phone: 916 928-1000
USA Toll Free: 800-824-5873
Fax: 916 928-1165
www.allweatherinc.com