



allweatherinc

30 ft Stacked Tower Model 8519

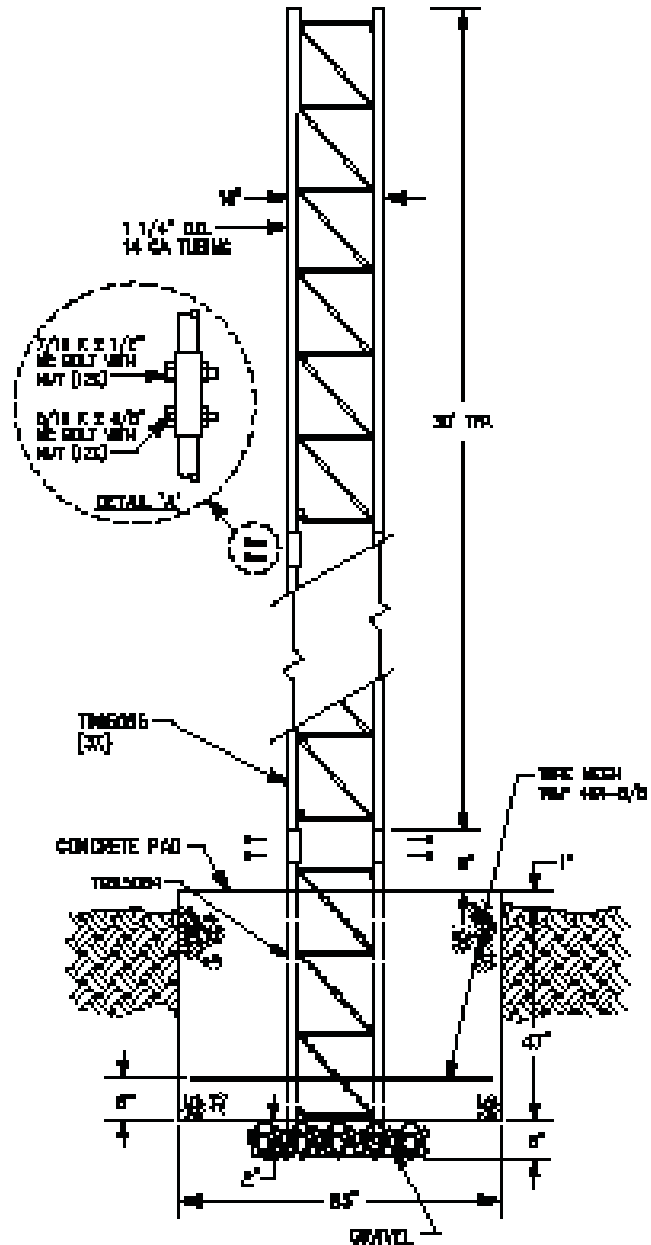
Overview

The Model stacked tower is constructed of heavy, 14 gauge special quality steel tubing in an 18-inch equilateral triangular pattern. The cross bracing is a zig-zag design of continuous, solid steel rod arc-welded to side rails every 15 inches. The Model 8519 tower is unpainted.

Accuracy by Design

The Model 8519 tower consists of three 10 ft sections, and a 5 ft base section for mounting into a concrete foundation. The entire tower is constructed using precision machines and electric arc welding throughout. The tower sections are completely hot dip galvanized after fabrication to give permanent protection against corrosion. Since galvanization is the last step in the process, all welding points and other points of construction are fully covered with molten zinc, which tends to seal itself should there ever be any breakage on the surface.

The Model 8519 tower is engineered to withstand 90 mph winds with a safety factor of 1.5. Guying kits are available from All Weather, Inc. to increase the load rating. Anti-climb and safety climbing devices are also available.



TOWERS

SPECIFICATIONS

Parameter	Specification
Tower Height	30 ft
Material	Steel Tubing
Distance between side rails	16.25 in
Side rail diameter	1.25 in
Side rail gauge	14 Gauge
Leg cross-sectional area	0.3043 sq. in.
Unbraced length of side rail (distance between cross pieces)	15.25 in
Section Length	10.4 ft
Section Weight	70 lb
Tower Weight	245 lb
Concrete Base Width	48 in
Concrete Base Depth	48 in

ORDERING INFORMATION

Part Number	Description
8519	30 ft Stacked Tower (unpainted)
DSPK	Obstruction Light Kit - Land Line
DSPKU	Obstruction Light & Antenna Kit (UHF)



All Weather Inc.

www.allweatherinc.com

Phone: 916-928-1000
USA Toll Free: 800-824-5873
Fax: 916-928-1165

Rev. B 05/2019