



30' Stacked Tower Models 8509 & 8519

Overview

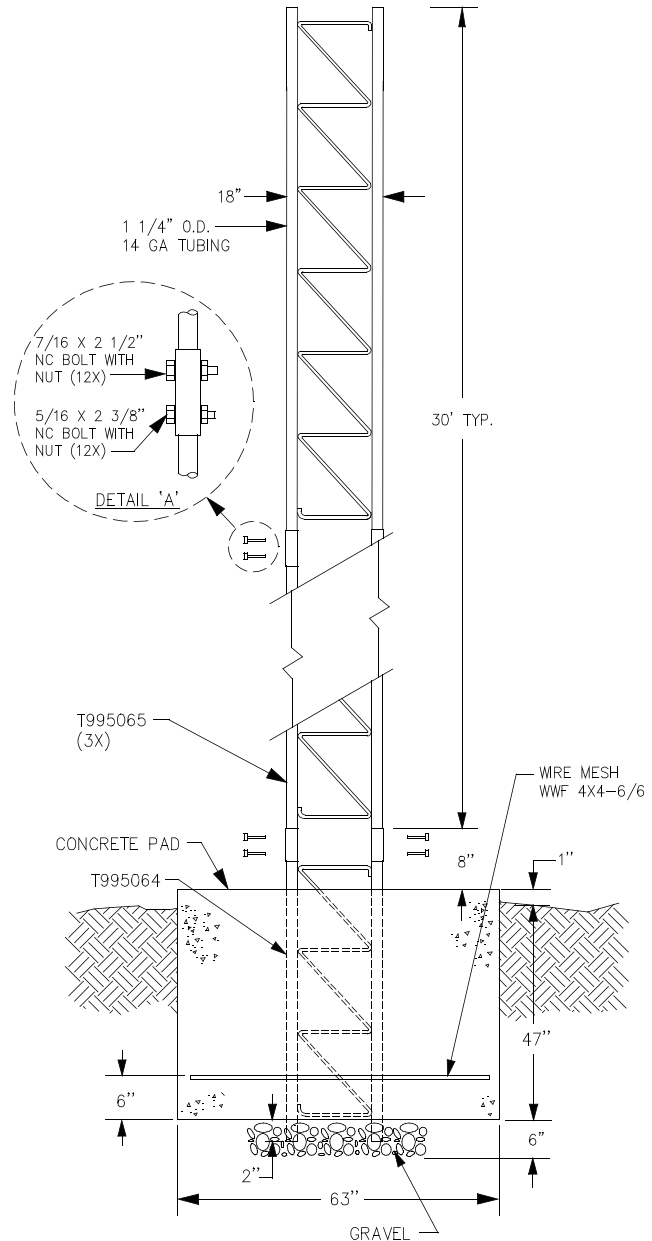
The Model 8509 and Model 8519 stacked towers are constructed of heavy, 14 gauge special quality steel tubing in an 18-inch equilateral triangular pattern. The cross bracing is a zig-zag design of continuous, solid steel rod arc-welded to side rails every 15 inches. The Model 8509 is painted in international orange and white, with six stripes. The Model 8519 is unpainted.

Accuracy by Design

Both models consist of three 10-foot sections, and a 5-foot base section for mounting into a concrete foundation. The entire tower is constructed using precision machines and selectric arc welding throughout. The tower sections are completely hot dip galvanized after fabrication to give permanent protection against corrosion. Since galvanization is the last step in the process, all welding points and other points of construction are fully covered with molten zinc, which tends to seal itself should there ever be any breakage on the surface.

Both Models 8509 and 8519 are engineered to withstand 90 mph winds with a safety factor of 1.5. Guying kits are available from All Weather, Inc. to increase the load rating. Anti-climb and safety climbing devices are also available.

See reverse for specifications.



SENSORS

SPECIFICATIONS

Parameter	Specification
Tower Height	30'
Material	Steel Tubing
Distance between side rails	16.25"
Side rail diameter	1.25"
Side rail gauge	14 Gauge
Leg cross-sectional area	0.3043 sq. in.
Unbraced length of side rail (distance between cross pieces)	15.25"
Section Length	10.4'
Section Weight	70 lbs.
Tower Weight	245 lbs.
Concrete Base Width	48"
Concrete Base Depth	48"

ORDERING INFORMATION

Part Number	Description
8509	30' Stacked Tower (painted)
85092	10' Tower Section Only (painted)
85093	Tower Base Only
8519	30' Stacked Tower (unpainted)
DSPK	Obstruction Light Kit - Land Line
DSPKU	Obstruction Light & Antenna Kit (UHF)



All Weather Inc.
 1165 National Dr.
 Sacramento, CA 95834

Phone: 916-928-1000
 USA Toll Free: 800-824-5873
 Fax: 916-928-1165

www.allweatherinc.com

Rev. A 11/2011