

ALL WEATHER INC

AUTOMATED WEATHER
OBSERVING SYSTEM (AWOS)


THE AWI AWOS SOLUTION




All Weather, Inc.'s AWOS 3000 is the latest in a long line of FAA certified AWOS systems, providing accurate and up-to-date weather information essential to the safe and economic operation of any airfield, large or small.

Few things change faster than the weather and All Weather, Inc.'s AWOS system provides the power and versatility necessary to stay on top of those changes with valuable weather data for VFR or IFR flights allowing more takeoffs and landings from your airport helping to provide maximum revenue.


AWOS 3000 is truly responsive to the unique needs of every airfield.

MULTIPLE VIEWS

Select from three display views, each geared toward a specific type of user. Tower View (as shown on this page), Diagnostics View (multiple pages depicting all system status) and Archive View (providing access to all stored data logs).

MENU DRIVEN WITH EASE

The top of each screen hosts various menu items. These lists allow for complete system configuration, user authorizations, entering manual observations, generating default and custom reports, manipulating alarms and a multitude of other functions providing complete control of your AWOS system.

DATA AVAILABILITY

The Model 3000 is Federal Aviation Administration (FAA) certified, meeting all the regulatory requirements of Advisory Circular (AC) 150/5220-16D, including interfaces to the National Airspace Data Interchange Network (NADIN) and the AWOS Data Acquisition System (ADAS).

These services are operated by the FAA to provide information for flight service stations, commercial airports, pilot briefings, National Weather Service forecasting and other weather services.

FUNCTIONALITY

Complete aviation weather display system

Scalable from AWOS I to AWOS IIPTZ

Ability to enter manual observations

Various customizable configurations

METAR, NADIN, ADAS and ATIS interfaces/ reporting

Voice output: speakers, GTA radio, dial-up

Data archiving: All weather data, statuses, METARS, etc.

Remote display connectivity

Internet display option

Multiple operational output modes (mode 1-mode 4)

Printer connections

KVM extension available

AWOS I

Wind Speed, Wind Gust, Wind Direction, Variable Wind Direction, Temperature, Dew Point, Altimeter Setting, Density Altitude, Complete Data Logs (including METAR) and Voiced Output

AWOS II (AWOS AV)

Same as AWOS I + Visibility, Variable Visibility, Precipitation and Day/Night

AWOS III

Same as AWOS II + Cloud Height and Sky Condition

AWOS IIIP

Same as AWOS III + Present Weather, Precipitation Type.

AWOS IIIT

Same as AWOS III + Lightning Location Identification.

AWOS IIIPT

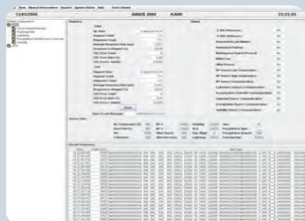
Same as AWOS III + Present Weather, Precipitation Type and Lightning Location

AWOS IIPTZ

Same as AWOS IIIPT + Freezing Rain Identification.

Stacked and fold over towers available.

All AWOS 3000 systems, including the predecessor 900 series, are built with the same high quality you would expect from All Weather, Inc. All systems and sensors meet or exceed the requirements of the FAA as well as the requirements of the international governing bodies, the ICAO and WMO.



THE DIAGNOSTIC DISPLAY

The Diagnostic Display is used by maintenance personnel to maintain and troubleshoot the system. This display provides a comprehensive view of system and sensor status.



VERSATILE VOICE OUTPUT

The voice server is installed in the CDP together with a microphone that allows input of 2 voice remarks, each up to 90 seconds in duration. These NOTAM (Notice To Airmen) messages are automatically broadcast with the synthesized data from the AWOS. The voice message can be heard over VHF radio, NDB, or VOR, as well as over telephone lines for dial-up access.

The AWOS 3000 also supports a system printer for report generation, error message reporting and printing of archived data.

REMOTE MAINTENANCE MONITORING

All Weather Inc.'s AWOS 3000 systems have full Remote Maintenance Monitoring (RMM) capabilities. Allowing remote access by authorized personnel to check system status, check/set various configuration items and download a variety of status logs. This feature aids in quickly monitoring a system for troubleshooting and maintenance so that your system remains fully operational providing valuable weather information to pilots and airport personnel when they need it.

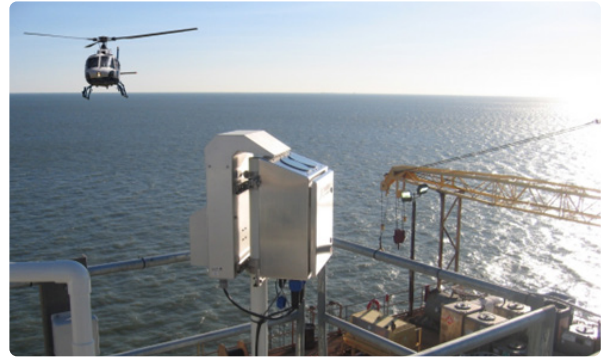
BUILT-IN SECURITY

Access to AWOS 3000 data and to configuration options is fully controllable by a single administrator. The administrator can control in detail the level of access and control available to all users. Unwanted access is prevented through the use of encrypted passwords and multi-level security.

As a result of All Weather, Inc.'s vast experience with AWOS, FAA and the NWS, we have produced the latest state-of-the-art AWOS systems and have installed them all across the United States, from the Arctic Circle in Alaska to the deserts of Arizona, to the Everglades of Florida. The AWI AWOS 3000 system continually provides accurate and reliable weather data in compliance with FAA Advisory Circular (AC) 150/5220-16.

EASY INSTALLATION / MAINTENANCE

All Weather Inc.'s AWOS 3000 system is simple and inexpensive to install and maintain. We provide an easy to follow site preparation guide to ensure an error free installation. With modularity and automated built-in diagnostics, system maintenance and fault checking is a snap. The diagnostics software immediately reports problems and notifies users/technicians with the exact cause, thus streamlining maintenance and keeping your system running longer.



Serving off shore platforms around the world



AWOS 3000 sample screen

All Weather, Inc. is an
ADB SAFEGATE Company

Web: www.allweatherinc.com
Email: info@allweatherinc.com
+1-916-928-1000
in US 1-800-824-5872